

Mayflex 1000

USER/OWNER'S MANUAL



Mayflex 1000

Contents

Educational & Technical Support	3
Safety & Specifications	4
Operating Principles & Installation	5
Mattress Installation - Steps 3, 4, 5	6
Mattress Installation - Step 6.....	7
Troubleshooting Guide	8
Cleaning & Disinfection	9
Mattress Warranty	10
Warnings & Precautions	11



Mayflower
MEDICAL

Specialists In Pressure Care™

Pressure Care Awareness & Educational Support

Increased pressure care awareness and staff education are key factors in the effective management of the prevention and treatment of pressure ulcers.

Education of staff and users should be an integral part of any pressure ulcer prevention strategy (Dealy, 1977).

Mayflower Medical's core aim is to help you raise and maintain the highest standards of pressure care for your patients. This is achieved through the provision of our free ongoing staff educational support materials and specifically designed high specification, therapeutic preventative aids.

The training of staff members should be tailored to the requirements and needs of the individual/s being cared for. There are also many key components that should

be covered in all pressure care training programmes.

As an owner of a Mayflex pressure care system you have free access to Mayflower Medical's comprehensive ongoing educational program. This package has been specially developed to help you add to your pressure care education resources and maintain continued learning. Making the development of your care staff's skill set easier and more cost effective than ever before.

To get FREE access to these support materials and receive the latest developments in pressure care, assessment and audit tools and the ongoing educational updates, simply visit - **www.mayflower-medical.co.uk/education.html**

Ongoing Technical & Clinical After Care Service Support

To help maintain high standards of care, our nursing management after care service enables you to have easy access to free technical and clinical support on any pressure care or equipment queries you may have.

As specialists in pressure ulcer prevention, our expert consultants are here to help you

with any specific care scenario you may have. For free and friendly aftercare support, simply call **+44 01752 547608**.

You have full access to Mayflower's pressure care equipment experts and tissue viability consultants for any questions and support you may require.

Patient Assessment & Quality Care Practices

It is important to remember that pressure care equipment should be seen as an aid to care and DOES NOT replace the need for good nursing care and intervention. All Mayflex preventative aids must be used as part of an individualised care plan which include proper nursing practices i.e. Patient turning / re-positioning and regular patient skin assessments.

"Professional judgement must be used in determining the risk status of the patient/

client. All assessments and, just as importantly, reassessments must be documented and the plan of care adjusted as necessary."

(Mrs Judy Waterlow MBE SRN RCNT - judy-waterlow.co.uk/2005)

For further information on risk assessments for ulcer prevention and the use of the Waterlow Score, visit - **www.judy-waterlow.co.uk**

Safety & Specification

It is important to read the information in this user manual before you use your Mayflex mattress.

Please follow the guidelines below for your added safety and maintaining system performance.

- Maximum patient weight it 127kg/ 20 stones.
- Avoid exposing pump to liquids.
- When cleaning do not use of Phenol based substances.
- Use Mayflex pumps with Mayflex mattresses only.
- This Mayflex overlay must be used on top of an existing underlay or mattress.

Power AC 220 – 240V 50/60Hz 7 Watts

Mode of operation:	Continuous
Fuse rating:	250 V 0.3A Fast blow
Storage Condition:	- min -10° Degrees + max 40° Degrees
Cycle Time:	10 minutes
Noise:	<30dB
Symbols used:	(O) Power OFF (I) Power ON
Complies with:	93/42/EEC
Unique Unit: number	(Example SNXXXXXX) (on pump)
Directive:	73/23/EEC
Test standard:	EN60335-1/A141995
Safety Standards:	CE

* Due to continual development of the above product, specifications are subject to change without prior notice.



- Consult the user instructions before use.



- Keep equipment dry.



- Class II equipment – this equipment is double insulated and needs no protective earth.



- Indicates that the equipment can be offered for sale within the European Union and that safety criteria has been met.



- Indicates separate collection for electrical and electronic equipment. The bar under the crossed out wheeled bin symbol indicates that a product was placed on the market after 13th august 2005. Users are informed of the requirement to keep WEEE separate from ordinary household waste. The user can play an important role in the re-use, recycling and recovery of WEEE.

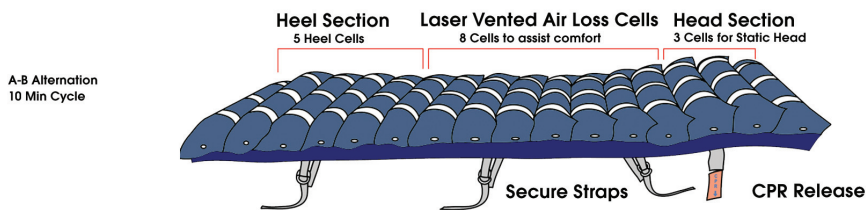
Mayflex 1000 - Operating Principles

The Mayflex 1000 is a high specification alternating air overlay mattress designed to prevent and treat pressure ulcers. Through the use of alternating therapy Mayflex systems work on the principle of actively encouraging tissue blood flow by gently increasing and decreasing pressure within the support surface over a 10 minute cycle. This results in the reduction of surface pressures helping to prevent tissue breakdown and encourage healing.

For added durability, and longer working life your Mayflex mattress has been constructed using high strength components and premium grade materials. The mattress

features a heavy duty base layer and a 100% waterproof, multi-stretch vapour permeable PU cover to reduce risks of friction and shear.

This Mayflex is an LVAL (Laser Vented Air Loss) mattress. Eight Thoracic/Sacral cells feature specialised laser vented air holes that help maximise air circulation. These encourage the cells to conform and increase the surface area in contact with the patient, helping to relieve pressure around bony prominences and vulnerable areas. The air ventilated from these cells help decrease humidity within the mattress, reducing moisture and risks of skin maceration.

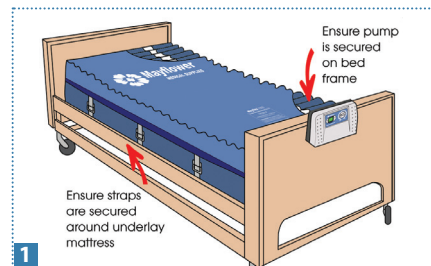


Mayflex 1000 - Installation Guide

STEP 1 - Initial Installation

Place the Mayflex overlay mattress on top of an existing mattress ensuring it conforms to the size of the base. When placing the Mayflex overlay on the bed ensure the Mayflex logo is at the top end of the bed.

Fasten the Mayflex overlay securing straps so they are underneath the underlying foam mattress.

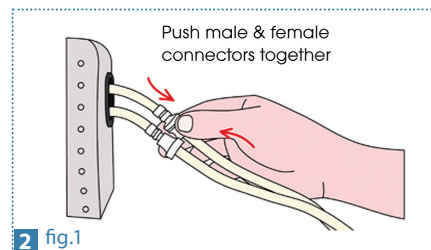


CAUTION: Please ensure that mattress height does not render any bed side rails ineffective.

STEP 2 - Connect Pump

Connect the push fit hose connector (fig.1) from the foot of the mattress to the air outlet of the pump, male to female.

Check to ensure that the tubes cannot be crushed/obstructed by side rails.

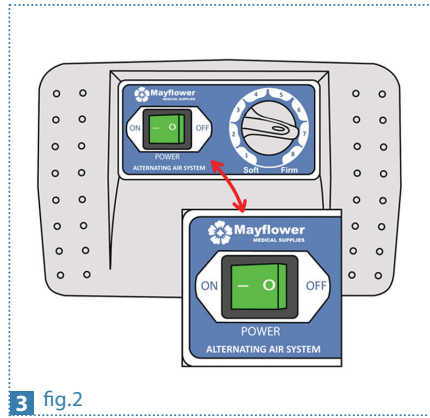


STEP 3 – Power Connection

Plug the pump power cable into the mains outlet. Ensure that electrical cables are safe and tidy and are not caught in the bed frame and free from obstruction.

Turn the power on at the mains, and then turn the power switch on at the pump to the 'on' position (fig.2).

CAUTION: It is important to routinely inspect power cables to ensure they are not obstructed or causing a tripping hazard. Check the power cable is not under strain or damaged.



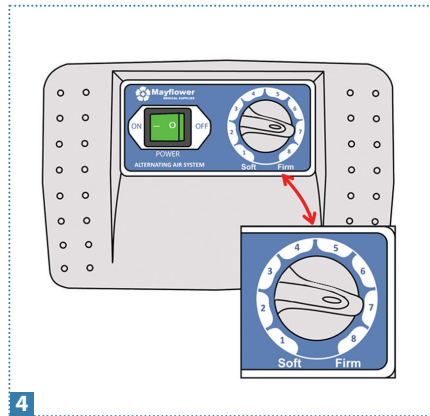
3 fig.2

STEP 4 – Inflate Cells

Ensure that the CPR valve is closed. Set the correct weight on the comfort control dial (please refer to Comfort Guidelines - page 7 / fig.3). This dial enables you to adjust the firmness of the mattress.

The pump will then begin to inflate the air cells and run continuously in dynamic mode. The alternating function will inflate and deflate the mattress cells over a 10 minute cycle.

CAUTION: It is important to ensure that no person is laying or sitting, or that any weight is on the mattress when it is being initially inflated.



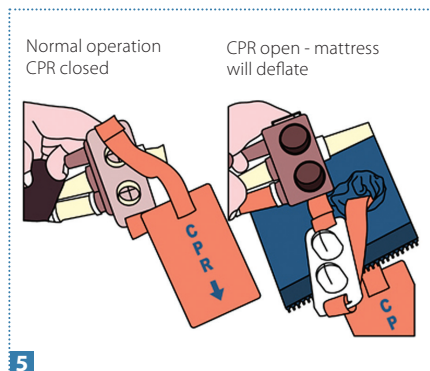
4

STEP 5 – Mattress CPR Check

After approximately 15-25 minutes the mattress should be fully inflated, if the mattress is not fully inflated, unzip the cover to check the CPR valve is in closed position and the pump is connected to the mattress correctly.

Please ensure that the PU mattress cover is fully zipped and CPR connection is closed properly after inspection.

Once fully inflated the mattress is ready to be used.

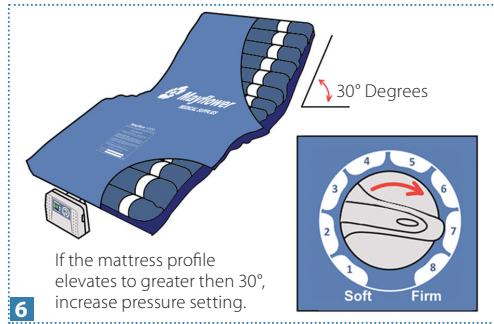


5

STEP 6 – Comfort Check

Re-check the comfort control setting on the pump unit. If required adjust the control dial to increase or decrease the required firmness of the mattress using the patient weight as an initial starting guideline.

If the patient back rest moves greater than 30° Degrees, increase the pressure in the mattress to accommodate the extra load on the sacral cells.



Hand Check

To check the patient is being properly supported, slide one hand in between the air mattress and base to ensure that the patient is not bottoming out. A gap of 1-2 inches between patients bottom and bed base is an acceptable range and an indication of correct pressure setting, if this is not so, pressure can be adjusted accordingly using the comfort control dial.

Transport Mode

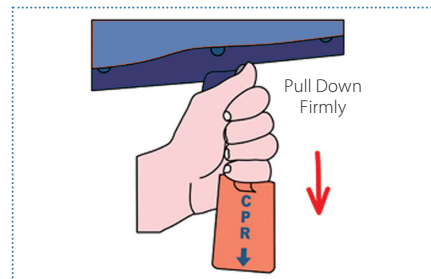
If you require to move the mattress without deflation, simply disconnect the two air hoses from the Mayflex pump unit, and connect them together. This will result in the mattress system being equalised, and the mattress cells will then retain pressure when pump unit is turned off.

CPR Function

This mattress features a Cardio Pulmonary Resuscitation (CPR) valve on one side.

In the event of cardiac arrest: pull the CPR down firmly and unplug air hoses from pump this will start immediate mattress deflation.

IMPORTANT: Please ensure that all care staff are trained and familiarised with the mattress and this function.



Comfort Control Guidelines

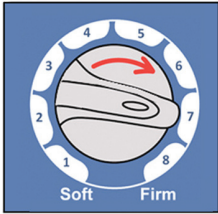
	PRESSURE RANGE	WEIGHT IN KGS	WEIGHT IN STONES
	Setting 1	32 Kg	5 stones
	Setting 2	44 Kg	7 stones
	Setting 3	57 Kg	9 stones
	Setting 4	69 Kg	11 stones
	Setting 5	82 Kg	13 stones
	Setting 6	95 Kg	15 stones
	Setting 7	107 Kg	17 stones
	Setting 8	127 Kg	20 stones

fig.3

Troubleshooting Guidelines

FAULT/PROBLEM DESCRIPTION	ITEMS TO CHECK	SOLUTION
No indication that the pump is on.	Check that the pump unit is connected to the mains power supply.	Check the pump is switched on. See Step 3/Pg 4.
	Ensure mains plug is connected and on.	Check the pump is switched on.
	Check mains plug fuse.	Replace fuse if blown.
	Check if mains socket is faulty.	Try another socket.
Low pressure in mattress/mattress not inflating.	Check that the pump unit is connected to the mains power supply.	Check the pump is switched on and fuse in plug is ok.
	Check pump / mattress air connections are fitted securely. Ensure air is coming from pump.	Ensure connectors are fastened securely and reconnect pump air hoses if loose. See Step 2/Pg3.
	Check CPR is connected correctly and is not leaking.	Reconnect CPR if not secure. See Step 5/Pg 4.
	Check the connector tubes for kinks, obstructions or damage.	Untwist any kinks, or move any obstructions.
	Check the setting on the comfort control pressure range dial.	Turn up dial to increase pressure, wait for pressure to stabilise (a few minutes) before making another adjustment.
	Remove filter on back the of the pump to check if it is dirty.	Replace with new filter.
Pump Controls lock up 'freeze'.	Turn off and unplug the pump.	Wait a few seconds and plug the pump back in. Turn on the pump.

If not resolved contact your Mayflex supplier: 01752 547608

Cleaning & Disinfection Protocol

It is very important to have a strict cross infection, cleaning and disinfection policy in line with current Hospital/Nursing Home infection control guidelines.

1. Remove the bedding.
2. If necessary, inflate the mattress.
3. Ensure that the power unit is off.
4. Unplug the power cord from the wall outlet.
5. Ensure that the underside of the mattress is clear of all sharp objects.
6. Examine the surface of the power unit and mattress assembly components for visible blood or body fluids.
7. Perform one of the following:
 - If blood is present, decontaminate the whole mattress product in line with current hospital or Nursing Home Guidelines.
 - If blood is not present, remove any soil from the cover with paper towels.
NOTE: If grossly soiled, the cover should be removed, cleaned and decontaminated.
8. Using a clean sponge or paper towel, wipe down the cover surface and cells with a dilute detergent solution or recommended cleaner disinfectant or other germicidal detergent solution.
9. Cleaning and disinfection may be carried out on the cover with hand hot water and a neutral detergent or with a sodium hypochlorite solution (0.1% or 1000 parts per million available chlorine).
10. Alternatively remove the cover and launder, 71° C (160°F), using normal detergents. It is essential that articles be thoroughly dried after all cleaning procedures and before storage.
11. Perform the following steps to clean the power unit and hose fittings:
 - A. Wipe all controls, chassis and hose fittings with a damp cloth and a mild detergent.
 - B. Using a nylon brush, gently clean all crevices as they can harbour micro organisms.
 - C. Air dry all treated surfaces.

WARNING: Protective clothing should be worn when performing cleaning procedures.

WARNING: Do not use Phenol based cleaning solutions

All equipment should be inspected. Any item that is visibly soiled with the patient's blood or other body fluids should be properly cleaned or removed. It is recommended that the system is clean regularly and after each patient use.

In many cases it will be only be necessary to remove the mattress cover for cleaning.

If there is obvious soiling a complete cleaning or decontamination will be required.

For a complete decontamination service and certification please call 01752 547608.

Mayflex - Full Mattress Exchange Warranty

Your Mayflex pump and mattress has been built using only high quality specification materials and components. It's construction and design is aimed at providing you with a therapeutic support surface that will give you years of good service.

Mayflex Pump Unit: The Mayflex pump unit is guaranteed to be free of defects in material, design, and workmanship for twenty four (24) months from the date of purchase. If there is ever a product defect within this period you will be sent out a loan system (next working day if notified before 12pm) while your pump is repaired or replaced, free of charge.

Mayflex Mattress: The Mayflex mattress is guaranteed to be free of defects in material, design, and workmanship for twenty four (24) months from the date of purchase. If there is ever a product defect within this period you will be sent out a loan system (next working day if notified before 12pm) while your mattress is repaired or replaced, free of charge.

Mayflex - Extendable Mattress Warranty

For extended warranty packages please contact Mayflower Medical on 01752 547608.

Free Technical Support: If you need any assistance regarding the servicing of your Mayflex system please contact Mayflower Medical. It is important to note down the serial number on the back of the pump for future reference. Please quote this number when contacting the serving department.

PLEASE NOTE

Any Mayflex equipment will be repaired or replaced if discovered faulty within the warranty period. The warranty is subject to the conditions below;

- 1) The defect is not caused by human error or misuse (i.e strained/obstructed power cables).
- 2) The product is returned in it's original packaging.
- 3) The equipment has been used in accordance with the user manual, and only used for the purpose for which it was intended.
- 4) Any maintenance has been performed by a suitably qualified individual.
- 5) The maintenance guidelines as set out for the Mayflex system has been followed.

Model Number:

Pump Serial Number:

Warnings & Precautions

WARNING: The use of side rails and other restraints can result in injury or death - through potential entrapment and potential patient falls. Please see MHRA Device Bulletin DB 2006(06) for details.

WARNING: Risk of electrical shock, serious injury or death. Only authorised technicians should open the pump unit for servicing and maintenance procedures. Electrical equipment can be extremely dangerous if damage or misused.

WARNING: Before any cleaning or disinfection procedure, ensure that the pump system is switched off and unplugged from the mains power supply.

WARNING: The maximum patient weight limit is 20 st/127 Kg

DISCLAIMER :

- A. Terms Such as 'Medium Risk' 'High Risk' and 'Very High Risk' are a description of a person's risk levels, these persons may be at danger of developing a pressure sore the higher the risk status level.
- These risk levels are assessed by nurses and as there is a variability between nurse measurements/observations, these descriptive risk levels should only be used as guideline for the risk assessment methods being used i.e. Waterlow, Norton and Braden. Professional judgement must be used in determining the risk status of the patient/client.
- B. Mayflower Medical uses these factors and terms based on the existing market research and internal research to show the suitability and effectiveness of the pressure care systems provided.
- Internal and External research is and will always be ongoing. These risk factors should not be taken as prescriptive criteria.
- C. Mayflex support surfaces should be seen as an aid to care and DO NOT replace the need for good nursing care and intervention. All Mayflex products must be used as part of an individualised care plan which include proper nursing practices i.e. turning/re-positioning, and regular patient skin assessments.
- D. Pressure relieving equipment alone will not prevent pressure ulcers. Pressure ulcers are multi factorial and many external and internal factors cause them to develop. It is up to the professional judgement of the nurse to assess the risk and develop a care plan which prescribes suitable pressure reducing/relieving equipment and external care. Some pressure sores are inevitable due to falls and periods of immobility these sores can develop hours after the injury, in these instances a pressure ulcer can develop and Mayflower Medical cannot guarantee the use of the equipment alone will prevent pressure ulcer formation.



Mayflower Medical

Wessex House
Upper Market Street
Eastleigh
Hants
SO50 9FD